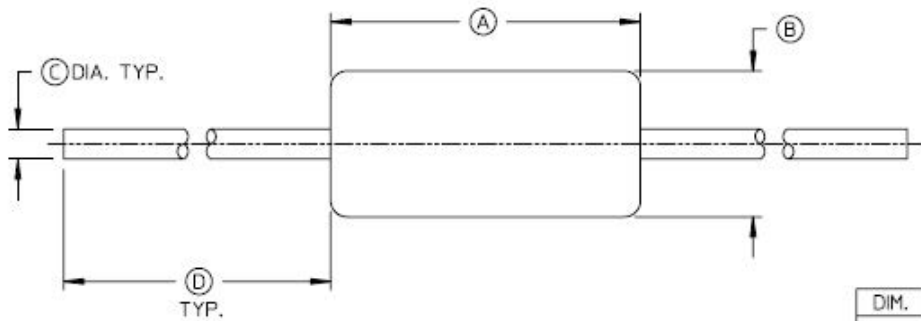


REVISIONS	
REV	DESCRIPTION
M1	DWG INITIATED



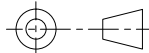
DIM.	INCHES		MM	
	MIN.	MAX.	MIN.	MAX.
A	.145	.165	3.68	4.19
B	.068	.075	1.72	1.91
C	.014	.016	.35	.41
D	1.000	1.500	25.4	38.1

NOTES:

- MARKING TO BE
 - DIGITAL WHERE THE FORM IS MAXXXX OR MAXXXX AND A CATHODE BAND OR POLARITY SYMBOL OR
 - EIA COLOR CODED BANDS WHERE BOTTOM BAND DENOTES CATHODE END AND
 - FP/K BROWN DENOTES 'MA40' AND CATHODE END FOR ALL MA TYPE NUMBERS.
 - FP/K TRANSPARENT BLUE DENOTES 'MA41' AND CATHODE END FOR ALL MA TYPE NUMBERS.
 - FP/K ORANGE DENOTES 'MA43' AND CATHODE END FOR ALL MA TYPE NUMBERS.
 - FP/K PHLOX VIOLET DENOTES 'MA45' AND CATHODE END FOR ALL MA TYPE NUMBERS.
 - GOLD BAND DENOTES 'MA47' AND CATHODE END FOR ALL 'MA47' AND CATHODE END FOR ALL MA TYPE NUMBERS.
 - SILVER BAND DENOTES 'MA48' AND CATHODE END FOR ALL MA TYPE NUMBERS.
- PLEASE NOTE THAT OPTION 1. A. IS THE PREFERRED AND RECOMMENDED MARKING.
- TIN PLATE 300 MICRONS MIN. PER ASTM B 545.
- PARTS MUST PASS SOLDERABILITY PER MIL-STD-7500 METHOD 2026.10
- INTERPRET DRAWING IN ACCORDANCE WITH ANSI Y14.5M, 1982 DIMENSIONING AND TOLERANCING.

UNLESS OTHERWISE SPECIFIED INTERPRET DRAWING PER ASME Y14.5 DO NOT SCALE THIS DRAWING

NOTE: THIS DRW INCORPORATES THIRD ANGLE PROJECTION



M/A-COM Technology Solutions, INC. CONFIDENTIAL INFORMATION SUBJECT TO NDA

The information contained in this document or material is the valuable and confidential property of M/A-COM Technology Solutions Holdings, Inc. and/or its subsidiaries or affiliates (collectively MACOM), provided to you subject to a non-disclosure agreement between you and MACOM solely for use in supporting MACOM's business as and to the extent MACOM authorizes in writing from time to time. This information shall be held in strictest confidence and shall not be reproduced, published, disclosed to others, or used for any purpose except as and to the extent specifically authorized by MACOM in a separate written agreement. If permission is granted for reproduction, this document or material shall be promptly returned to MACOM or destroyed upon request, completion of the use for which it was made available to recipient, or termination of MACOM's relationship with recipient, whichever first occurs.

UNLESS OTHERWISE SPECIFIED DIMENSIONS ARE IN INCHES

TOLERANCES ON

DECIMALS	ANGLES
.X ± .1	±0.5°
.XX ± .02	
.XXX ± .005	
.XXXX ± .0005	

UNLESS OTHERWISE SPECIFIED $\sqrt[63]{}$ ALL OVER

MATERIAL

X

FINISH

X



MACOM Technology Solutions, Inc.
100 Chelmsford Street
Lowell, MA 01851

TITLE

Outline Drawing

SIZE

CAGE CODE

DRAWING NO.

A

55NN2

ODS-54

SCALE:

X/X

WEIGHT

/

SHEET 1 OF 1

X	X
NEXT ASSY	USED ON
APPLICATION	