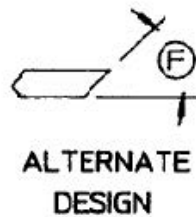
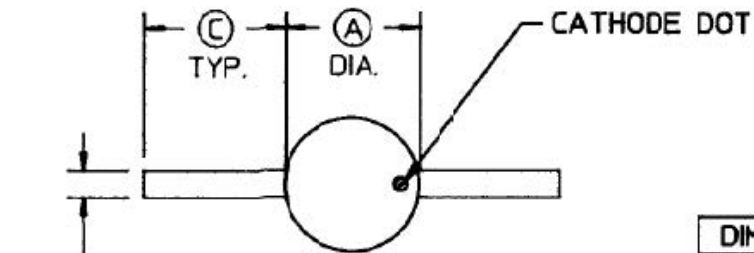
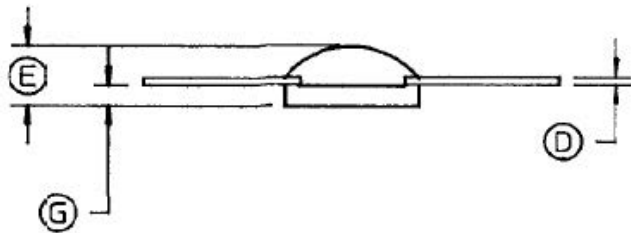


REVISIONS	
REV	DESCRIPTION
6A	DWG INITIATED


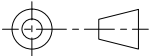


DIM.	INCHES		MM	
	MIN.	MAX.	MIN.	MAX.
A	.090	.110	2.29	2.80
B	.018	.022	0.46	0.56
C	.095	.105	2.41	2.67
D	.003	.005	0.08	1.3
E	—	.050	—	1.27
F	45° NOMINAL		45° NOMINAL	
G	—	.014	—	0.360



NOTES:

1. EPOXY WILL BE ALLOWED TO RUN UP LEADS TO A MAXIMUM OF .015 BEYOND DIA.
2. CATHODE WILL BE INDICATED BY INK DOT OR ANGLED LEAD.

UNLESS OTHERWISE SPECIFIED INTERPRET DRAWING PER ASME Y14.5 DO NOT SCALE THIS DRAWING		UNLESS OTHERWISE SPECIFIED DIMENSIONS ARE IN INCHES		 MACOM Technology Solutions, Inc. 100 Chelmsford Street Lowell, MA 01851	
NOTE: THIS DRW INCORPORATES THIRD ANGLE PROJECTION		TOLERANCES ON		TITLE	
		DECIMALS	ANGLES	Outline Drawing	
		.X ± .1 .XX ± .02 .XXX ± .005 .XXXX ± .0005	±0.5°		
M/A-COM Technology Solutions, INC. CONFIDENTIAL INFORMATION SUBJECT TO NDA		UNLESS OTHERWISE SPECIFIED 63/ ALL OVER		DRAWING NO.	
The information contained in this document or material is the valuable and confidential property of M/A-COM Technology Solutions Holdings, Inc. and/or its subsidiaries or affiliates (collectively MACOM), provided to you subject to a non-disclosure agreement between you and MACOM solely for use in supporting MACOM's business as and to the extent MACOM authorizes in writing from time to time. This information shall be held in strictest confidence and shall not be reproduced, published, disclosed to others, or used for any purpose except as and to the extent specifically authorized by MACOM in a separate written agreement. If permission is granted for reproduction, this legend must be included in any and all copies. This document or material shall be promptly returned to MACOM or destroyed upon request, completion of the use for which it was made available to recipient, or termination of MACOM's relationship with recipient, whichever first occurs.		MATERIAL	X	A	55NN2
APPLICATION		FINISH	X	SCALE:	X/X
X	X			WEIGHT	/
NEXT ASSY	USED ON			OD-S-137	
				SHEET 1 OF 1	