

GaN Power Transistor, 28 V, 18 W 3.3 - 3.8 GHz



NPT35015
Rev. V1

Features

- Optimized for CW, Pulsed, WiMAX, and other applications from 3.3 - 3.8 GHz
- 18 W P3dB CW Power
- 25 W P3dB Peak Envelope Power
- 1.7 W Linear Power @ 2% EVM for single carrier OFDM, 10.3 dB peak/average, 10.3 dB @ 0.01% Probability on CCDF, 10.5 dB Gain, 18% Drain Efficiency
- 100% RF tested
- Thermally-Enhanced Surface Mount SOIC Package
- High Reliability Gold Metallization Process
- Subject to EAR99 Export Control
- RoHS* Compliant

Applications

- Defense Communications
- Land Mobile Radio
- Avionics
- Wireless Infrastructure
- ISM
- VHF/UHF/L/S-Band Radar

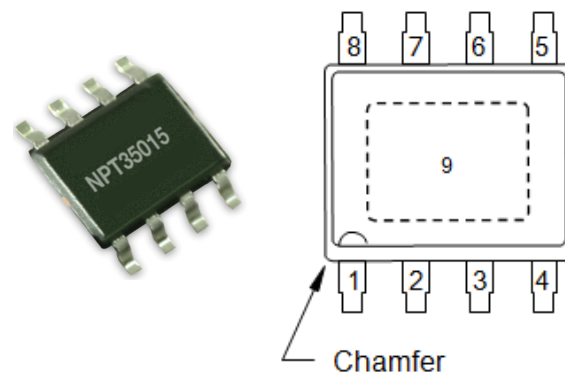
Description

The NPT35015 GaN HEMT is a power transistor optimized for 3.3 - 3.5 GHz operation. This device supports CW, pulsed, and linear operation with output power levels to 18 W. This transistor is assembled in an industry standard surface mount plastic package.

Ordering Information

Part Number	Package
NPT35015DT	Tube (97 pieces)
NPT35015DR	1500 piece reel

Functional Schematic



Pin Configuration

Pin #	Function
1 - 4	Gate
5 - 8	Drain
9	Paddle ¹

1. The exposed pad centered on the package bottom must be connected to RF and DC ground. This path must also provide a low thermal resistance heat path.

* Restrictions on Hazardous Substances, compliant to current RoHS EU directive.

Typical 2-Tone RF Performance: (measured in test fixture)

Freq. = 3.5 GHz, V_{DS} = 28 V, I_{DQ} = 200 mA, Tone Spacing = 1 MHz, T_C = 25°C

Parameter	Test Conditions	Symbol	Min.	Typ.	Max.	Units
Peak Envelope Power	3 dB Compression	$P_{3dB, PEP}$	14	18	—	W
	1 dB Compression	$P_{1dB, PEP}$	—	10	—	W
Small Signal Gain	—	G_{SS}	10	11	—	dB
Drain Efficiency	3 dB Compression	η	43	48	—	%

Typical RF Specifications (CW): (measured in Load Pull System)

Freq. = 3.5 GHz, V_{DS} = 28 V, I_{DQ} = 200 mA, T_C = 25°C

Parameter	Test Conditions	Symbol	Min.	Typ.	Max.	Units
Average Output Power	3 dB Compression	P_{3dB}	—	18	—	W
Small Signal Gain	3 dB Compression	$P_{3dB, Pulsed}$	—	20	—	W
	1 dB Compression	$P_{1dB, Pulsed}$	—	15	—	W

Typical OFDM Performance: (measured in load pull system, refer to Table 1 and Figure 1))

V_{DS} = 28 V, I_{DQ} = 200 mA, Single Carrier OFDM waveform 64-QAM 3/4, 8 burst, 20 ms frame, 15 ms frame data, 3.5 GHz channel bandwidth, Peak/Avg = 10.3 dB @ 0.01% probability on CCDF, P_{OUT} = 1.7 W avg., T_C = 25°C

Parameter	Test Conditions	Symbol	Min.	Typ.	Max.	Units
Power Gain	3.3 - 3.8 GHz	G_P	—	10.5	—	dB
Drain Efficiency	3.3 - 3.8 GHz	η	—	18	—	%
Error Vector Magnitude	3.3 - 3.8 GHz	EVM	—	2	—	%
Input Return Loss	3.3 - 3.8 GHz	I_{RL}	—	10	—	dB

Handling Procedures

Please observe the following precautions to avoid damage:

Static Sensitivity

Gallium Nitride Circuits are sensitive to electrostatic discharge (ESD) and can be damaged by static electricity. Proper ESD control techniques should be used when handling these HBM Class 1A devices.

GaN Power Transistor, 28 V, 18 W

3.3 - 3.8 GHz



NPT35015
Rev. V1

DC Electrical Characteristics: $T_C = 25^\circ\text{C}$

Parameter	Test Conditions	Symbol	Min.	Typ.	Max.	Units
Off Characteristics						
Drain-Source Breakdown Voltage	$V_{GS} = -8\text{ V}, I_D = 8\text{ mA}$	V_{BDS}	100	—	—	V
Gate-Source Leakage Current	$V_{GS} = -8\text{ V}, V_{DS} = 60\text{ V}$	I_{DLK}	—	—	4	mA
On Characteristics						
Gate Threshold Voltage	$V_{DS} = 28\text{ V}, I_D = 8\text{ mA}$	V_T	-2.3	-1.8	-1.3	V
Gate Quiescent Voltage	$V_{DS} = 28\text{ V}, I_D = 200\text{ mA}$	V_{GSQ}	-2.0	-1.5	-1.0	V
On Resistance	$V_{GS} = 2\text{ V}, I_D = 60\text{ mA}$	R_{ON}	—	0.45	0.50	Ω
Drain Current	$V_{DS} = 7\text{ V}$ pulsed, pulse width 300 μs 0.2% Duty Cycle, $V_{GS} = 2\text{ V}$	I_D	—	5	—	A

Absolute Maximum Ratings^{2,3,4}

Parameter	Absolute Maximum
Drain Source Voltage, V_{DS}	100 V
Gate Source Voltage, V_{GS}	-10 to 3 V
Total Device Power Dissipation (derated above 25°C)	28 W
Junction Temperature, T_J	+200°C
Operating Temperature	-40°C to +85°C
Storage Temperature	-65°C to +150°C

2. Exceeding any one or combination of these limits may cause permanent damage to this device.

3. MACOM does not recommend sustained operation near these survivability limits.

4. Operating at nominal conditions with $T_J \leq 200^\circ\text{C}$ will ensure $\text{MTTF} > 1 \times 10^6$ hours.

Thermal Characteristics⁵

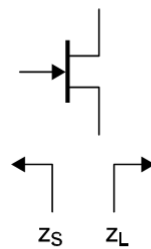
Parameter	Test Conditions	Symbol	Typical	Units
Thermal Resistance	$V_{DS} = 28\text{ V}, T_J = 200^\circ\text{C}$	$R_{\theta JC}$	6.25	$^\circ\text{C/W}$

5. Junction temperature (T_J) measured using IR Microscopy. Case temperature measured using thermocouple embedded in heat-sink.

Table 1: Optimum Impedance Characteristics for Single Carrier OFDM waveform 64-QAM 3/4, 8 burst, 20 ms frame, 15 ms frame data, 3.5 GHz Channel Bandwidth, Peak/Avg = 10.3 dB @ 0.01% probability on CCDF, 2% EVM.

Frequency (MHz)	Z_S (Ω)	Z_L (Ω)	P_{OUT} (W)	Gain (dB)	Drain Efficiency (%)
3300	5.4 - j10.3	2.9 - j2.5	1.7	10.9	19
3400	5.0 - j10.7	2.9 - j2.6	1.8	11.0	22
3500	4.4 - j11.2	2.8 - j2.7	1.7	10.9	21
3600	4.0 - j12.5	2.8 - j3.3	1.7	10.9	20
3700	3.5 - j13.4	3.0 - j3.8	1.8	10.8	20
3800	3.5 - j14.6	3.2 - j4.2	1.8	10.7	20

Impedance Reference



Z_S is the source impedance presented to the device.
 Z_L is the load impedance presented to the device.

Z_S and Z_L vs. Frequency

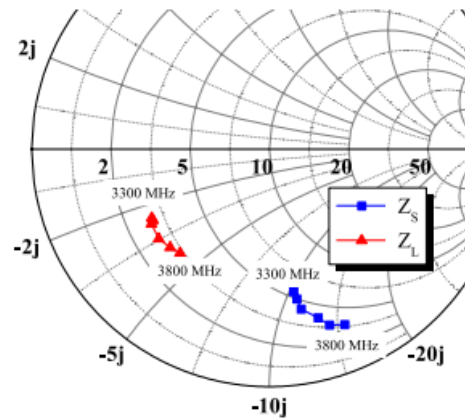


Figure 1 - Optimum Impedance Characteristics for OFDM Tuning, $V_{DS} = 28$ V, $I_{DQ} = 200$ mA

Load-Pull Data, Reference Plane at Device Leads:
 $V_{DS} = 28\text{ V}$, $I_{DQ} = 200\text{ mA}$ (unless noted)

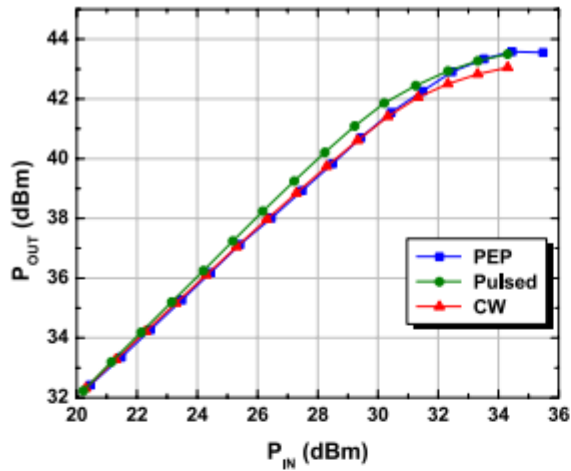


Figure 2 - CW, pulsed CW, and PEP, 3500MHz, Constant Impedance States

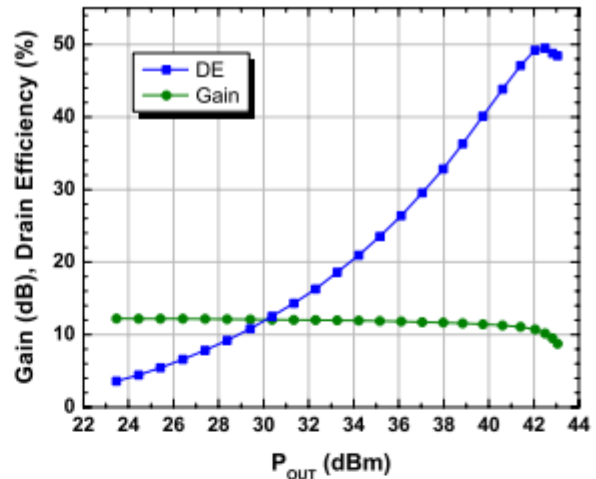


Figure 3 - CW Power Sweep, 3500MHz

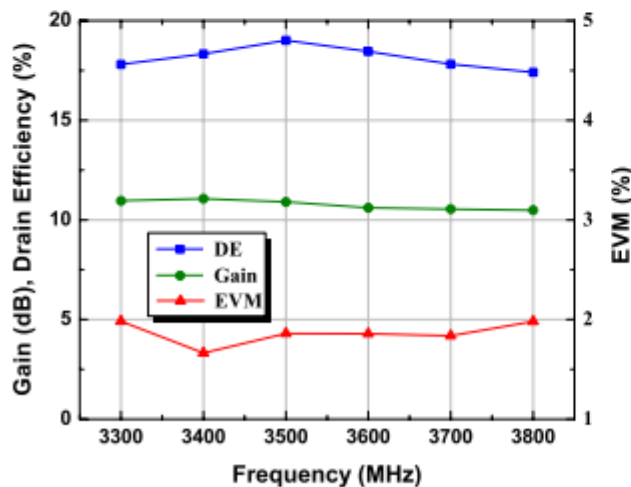


Figure 4 - Typical OFDM Performance
 $P_{OUT} = 1.5\text{ W}$

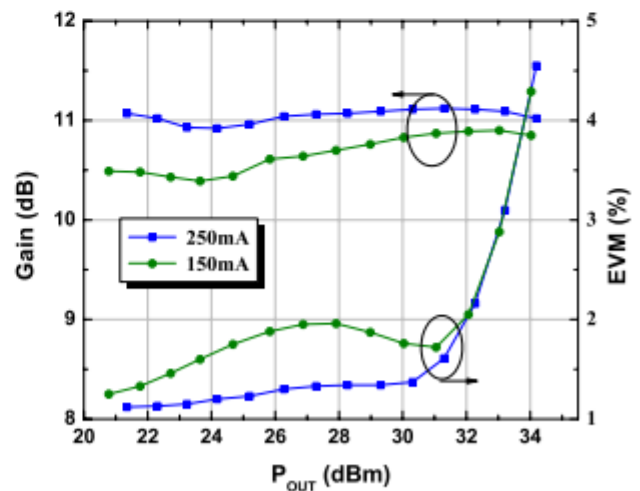


Figure 5 - Typical OFDM Performance
at 3500MHz versus I_{DQ}

Load-Pull Data, Reference Plane at Device Leads:

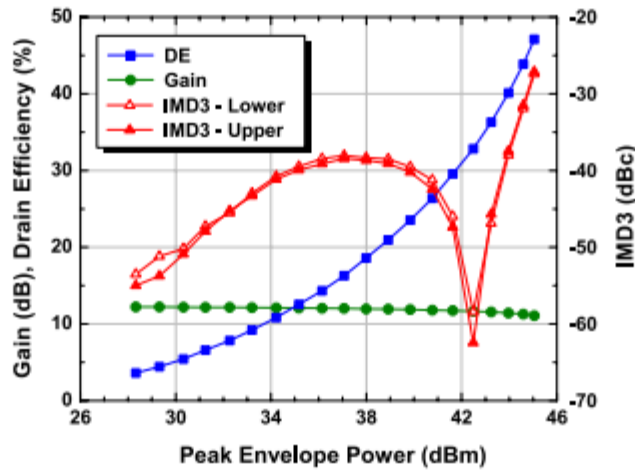


Figure 6 - Typical IMD3 Performance, 3500MHz

Typical Device Characteristics

$V_{DS}=28V$, $I_{DQ}=200mA$, $T_A=25^{\circ}C$ unless otherwise noted.

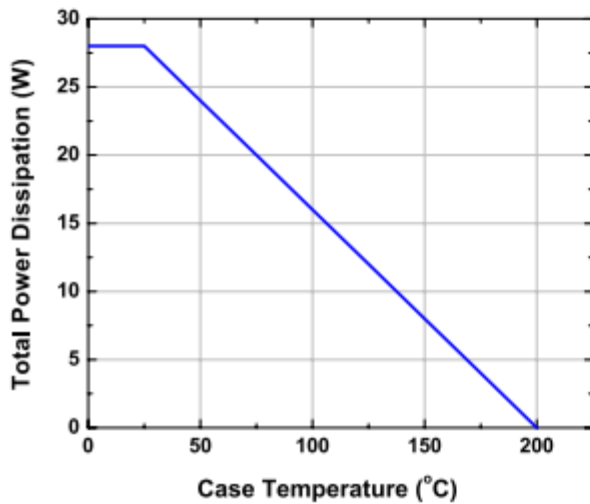


Figure 7 - Power Derating Curve

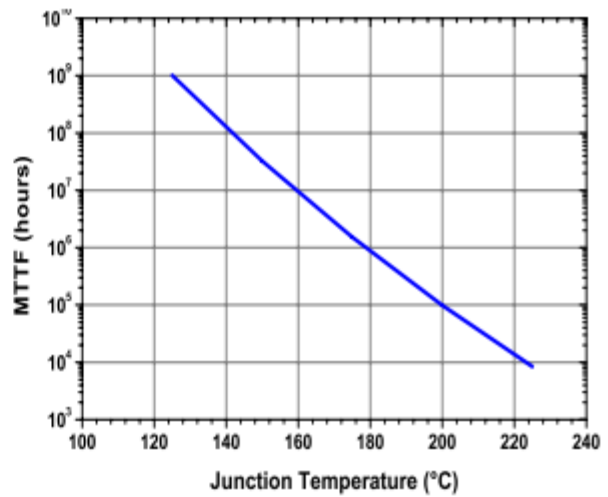


Figure 8 - MTTF of NRF1 Devices

AD-006 3.4 - 3.6 GHz, 1.7 W Linear WiMAX Application Board & Schematic
802.16e Single Carrier OFDM, 64-QAM 3/4, 8-burst, 20 ms frame 100% filled, 3.5 MHz channel bandwidth, PAR = 10.3 dB @ 0.01% CCDF

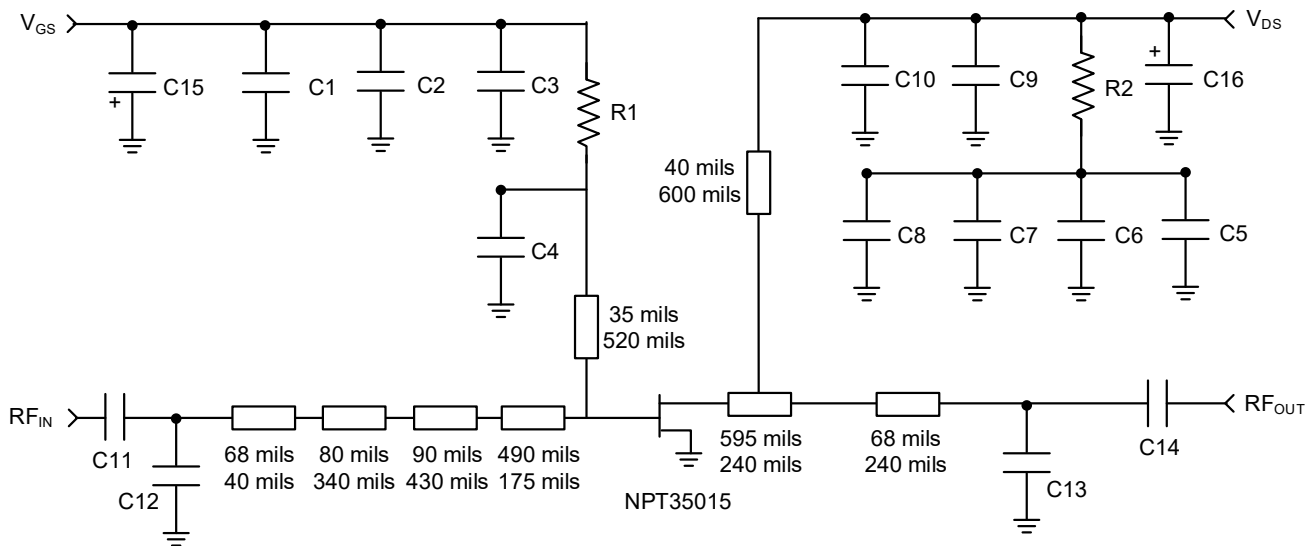
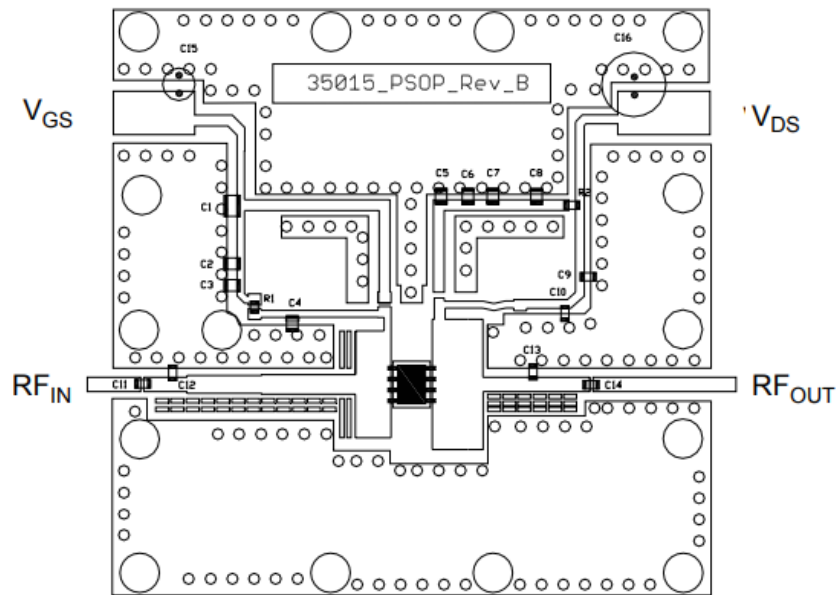


Figure 9 - AD-006 Demonstration Board and Schematic

GaN Power Transistor, 28 V, 18 W

3.3 - 3.8 GHz



NPT35015
Rev. V1

Parts list

Reference	Value	Tolerance	Manufacturer	Part Number
C1	0.1 μ F	10%	Kemet	C1206C104K1RACTU
C2, C7	0.01 μ F	10%	AVX	12061C103KAT2A
C3, C6	1000 pF	10%	Kemet	C0805C102K1RACTU
C5	100 pF	10%	Kemet	C0805C101K1RACTU
C8	1 μ F	10%	Panasonic	ECJ-5YB2A105M
C4, C9 - C11, C14	5.6 pF	\pm 0.1 pF	ATC	ATC600F5R6B
C12	0.3 pF	\pm 0.1 pF	ATC	ATC600F0R3B
C13	0.6 pF	\pm 0.1 pF	ATC	ATC600F0R6B
C15	150 μ F	20%	Nichicon	UPW1C151MED
C16	270 μ F	20%	United Chemi-Con	ELXY630ELL271MK25S
R1	10 Ω	1%	Panasonic	ERJ-2RKF10R0X
R2	0.33 Ω	1%	Panasonic	ERJ-6RQFR33V
PCB	Rogers RO4350, $\epsilon_r=3.5$, t = 30 mils			

AD-006 3.4 - 3.6 GHz, 1.7 W Linear WiMAX Application Design

802.16e Single Carrier OFDM, 64-QAM 3/4, 8-burst, 20 ms frame 100% filled, 3.5 MHz channel bandwidth, PAR = 10.3 dB @ 0.01% CCDF

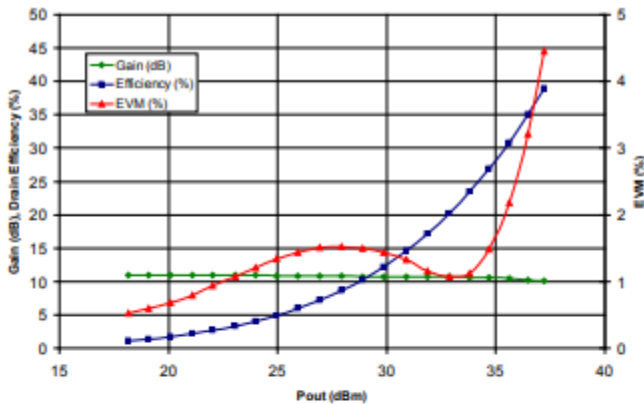


Figure 10 - Gain, Efficiency, EVM at 3400MHz

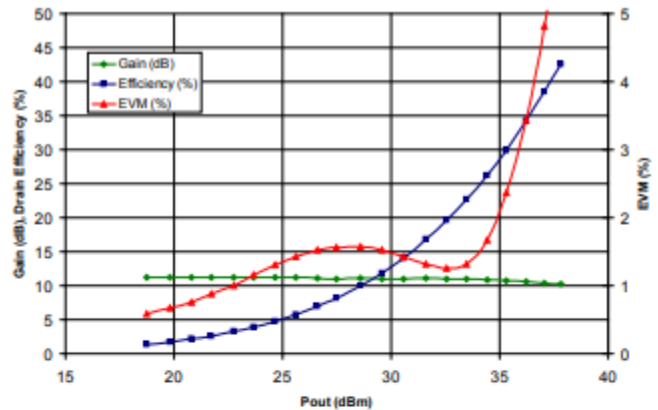


Figure 11 - Gain, Efficiency, EVM at 3500MHz

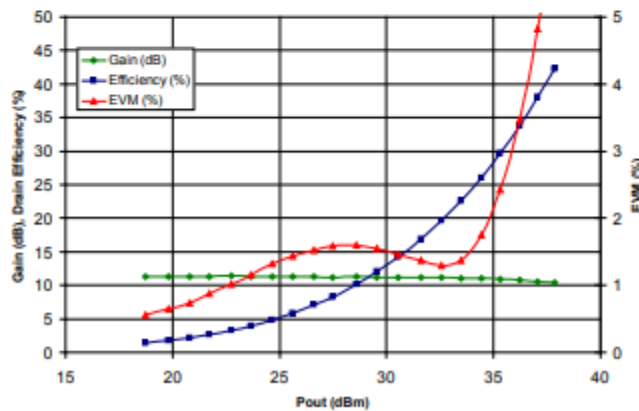


Figure 12 - Gain, Efficiency, EVM at 3600MHz

AD-006 3.4 - 3.6 GHz, 1.7 W Linear WiMAX Application Design

802.16e Single Carrier OFDM, 64-QAM 3/4, 8-burst, 20 ms frame 100% filled, 3.5 MHz channel bandwidth, PAR = 10.3 dB @ 0.01% CCDF

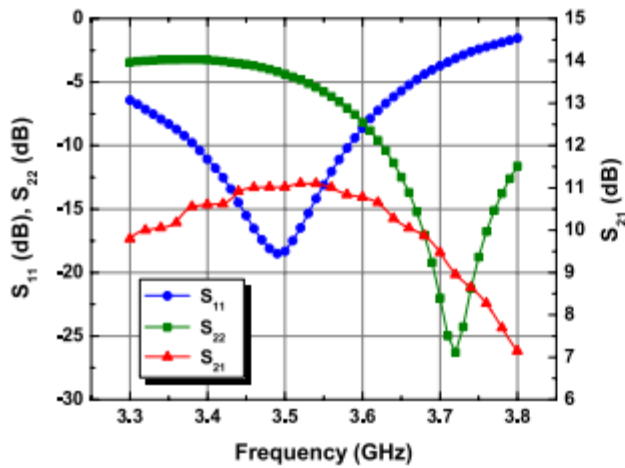


Figure 14 - Typical S_{11} and S_{21}

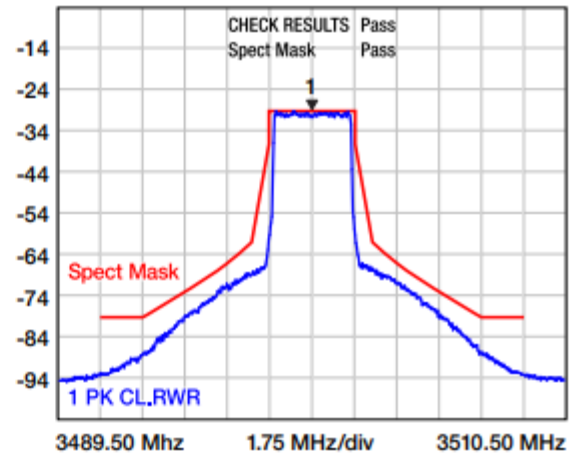
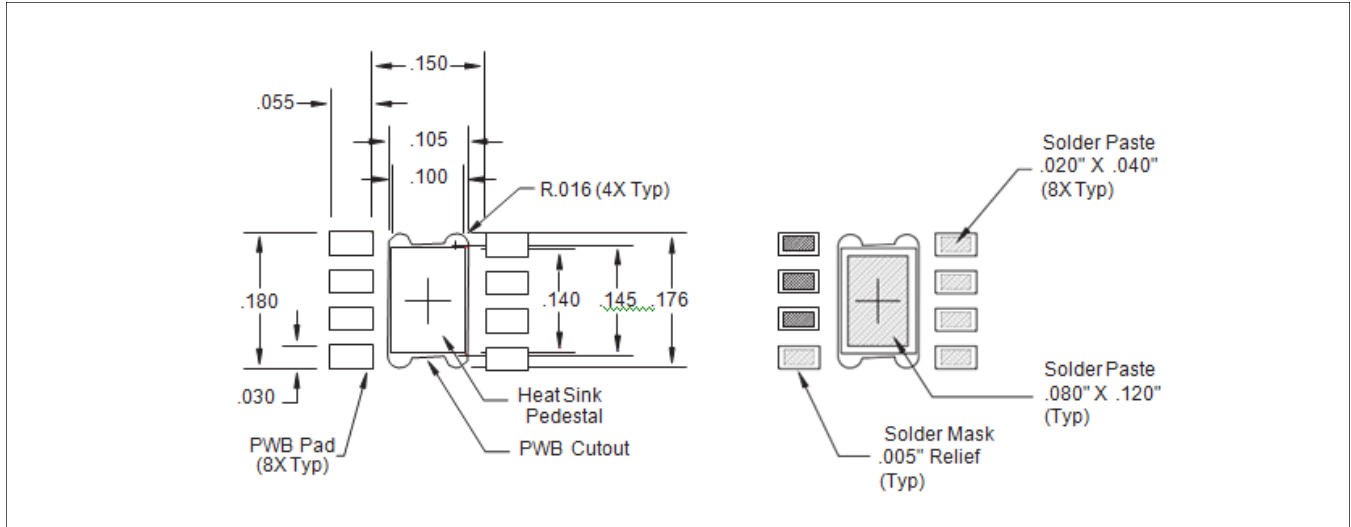
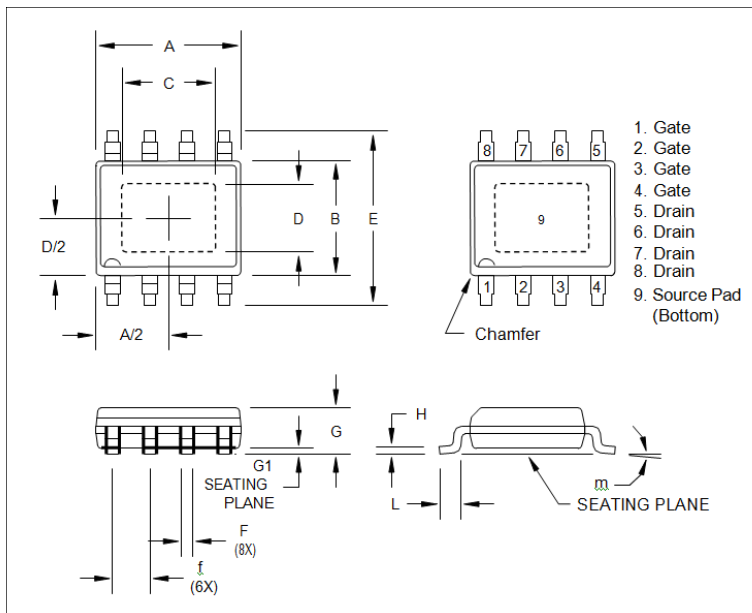


Figure 13 - ETSI Mask Compliance in Nitronex Demonstration Board at 3500MHz and $P_{OUT} = 1.5W$

Mounting Footprint



Package Dimensions and Pin out[†]



Dim.	Inches		Millimeters	
	Min.	Max.	Min.	Max.
A	0.189	0.196	4.80	4.98
B	0.150	0.157	3.81	3.99
C	0.107	0.123	2.72	3.12
D	0.071	0.870	1.870	2.21
E	0.230	0.244	5.85	6.19
f	0.050 BSC		1.270 BSC	
F	0.0138	0.0192	0.35	0.49
G	0.055	0.061	1.40	1.55
G1	0.000	0.004	0.00	0.10
H	0.075	0.098	1.91	2.50
L	0.016	0.035	0.41	0.89
m	0°	8°	0°	8°

[†] Meets JEDEC moisture sensitivity level 3 requirements.
Plating is Matte Sn.

MACOM Technology Solutions Inc. ("MACOM"). All rights reserved.

These materials are provided in connection with MACOM's products as a service to its customers and may be used for informational purposes only. Except as provided in its Terms and Conditions of Sale or any separate agreement, MACOM assumes no liability or responsibility whatsoever, including for (i) errors or omissions in these materials; (ii) failure to update these materials; or (iii) conflicts or incompatibilities arising from future changes to specifications and product descriptions, which MACOM may make at any time, without notice. These materials grant no license, express or implied, to any intellectual property rights.

THESE MATERIALS ARE PROVIDED "AS IS" WITH NO WARRANTY OR LIABILITY, EXPRESS OR IMPLIED, RELATING TO SALE AND/OR USE OF MACOM PRODUCTS INCLUDING FITNESS FOR A PARTICULAR PURPOSE, MERCHANTABILITY, INFRINGEMENT OF INTELLECTUAL PROPERTY RIGHT, ACCURACY OR COMPLETENESS, OR SPECIAL, INDIRECT, INCIDENTAL, OR CONSEQUENTIAL DAMAGES WHICH MAY RESULT FROM USE OF THESE MATERIALS.

MACOM products are not intended for use in medical, lifesaving or life sustaining applications. MACOM customers using or selling MACOM products for use in such applications do so at their own risk and agree to fully indemnify MACOM for any damages resulting from such improper use or sale.