

### Features

- 802.11a,n,ac Applications
- 0.9 dB  $T_X$  Insertion Loss
- 19 dB  $R_X$  Isolation
- 12 dB  $R_X$  Gain
- 2.2 dB Noise Figure
- 10 mA Current
- -40 dB EVM @ 23 dBm Input  
(802.11ac 80 MHz / 256 QAM)
- Lead Free 2 mm 12-lead STQFN package
- RoHS\* Compliant and 260°C Reflow Compatible

### Description

The MAMF-010614 is a multi-function MMIC which includes a SPDT switch and LNA with bypass mode for the  $R_X$  path. This part would typically be used on the front end of WLAN 802.11a,n,ac modules where small size is critical.

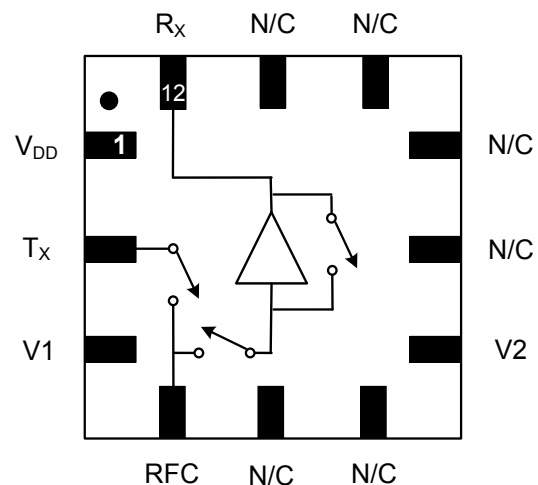
The MAMF-010614 delivers high isolation between  $T_X$  and  $R_X$  paths, low  $T_X$  insertion loss and a high gain, low noise  $R_X$  path.

### Ordering Information<sup>1,2</sup>

Part Number	Package
MAMF-010614-TR3000	3000 piece reel
MAMF-010614-001SMB	Sample Board

1. Reference Application Note M513 for reel size information.
2. All sample boards include 5 loose parts.

### Functional Schematic



### Pin Configuration<sup>3</sup>

Pin No.	Function	Description
1	$V_{DD}$	Drain Voltage Supply
2	$T_X$	$T_X$ Port
3	V1	Control 1
4	RFC	RF Common
5	N/C	No Connection
6	N/C	No Connection
7	V2	Control 2
8	N/C	No Connection
9	N/C	No Connection
10	N/C	No Connection
11	N/C	No Connection
12	$R_X$	$R_X$ Port
13	Paddle <sup>4</sup>	Ground

3. M/A-COM Technology Solutions recommends connecting unused package pins to ground.
4. The exposed pad centered on the package bottom must be connected to RF and DC ground.

\* Restrictions on Hazardous Substances, European Union Directive 2002/95/EC.

## Integrated SPDT Switch and LNA with Bypass Mode 5.0 - 6.0 GHz

Rev. V4

**Electrical Specifications: Freq. = 5.25 - 5.825 GHz,  $V_{DD} = 3\text{ V}$ ,  $V_C = 0/2.8\text{ V}$ ,  $T_A = 25^\circ\text{C}$**

Parameter	Test Conditions	Units	Min.	Typ.	Max.
Isolation	RFC to $T_X$ RFC to $R_X$	dB	—	19 19	— —
$T_X$ Insertion Loss	RFC to $T_X$	dB	—	0.9	1.2
$T_X$ Input / Output Return Loss	RFC to $T_X$	dB	—	12	—
$T_X$ Input P0.1dB	$T_X$ Path On	dBm	—	31	—
$T_X$ EVM	$P_{IN} = +23\text{ dBm}$ , 802.11AC 80 MHz / 256 QAM	dB	—	-42	—
$R_X$ Gain	RFC to $R_X$ , Gain Mode	dB	10	12	—
$R_X$ Insertion Loss	RFC to $R_X$ , Bypass Mode	dB	—	6	7.5
$R_X$ Input / Output Return Loss	RFC to $R_X$ , Gain Mode	dB	—	10	—
$R_X$ Noise Figure	Gain Mode	dB	—	2.2	—
$R_X$ Input IP3	Gain Mode	dBm	—	10	—
$R_X$ Input P0.1dB	Bypass Mode	dBm	—	10	—
$R_X$ Input P1dB	Gain Mode	dBm	-5	-3	—
$R_X$ EVM	$P_{IN} = -15\text{ dBm}$ , Gain Mode	dB	—	-46	—
Quiescent Current	No RF, Gain Mode, $V_{DD} = 3\text{ V}$	mA	—	10	12
Leakage Current	All States except High Gain	$\mu\text{A}$	—	10	—

### Absolute Maximum Ratings<sup>5,6</sup>

Parameter	Absolute Maximum
Input Power $R_X$ Gain Mode $R_X$ Bypass Mode $T_X$ , 5 $V_C$ , RFC - $T_X$ $T_X$ , 3.3 $V_C$ , RFC - $T_X$	0 dBm 20 dBm 35 dBm CW 33 dBm CW
$V_{DD}$	+5 volts
Operating Temperature	-40°C to +85°C
Storage Temperature	-65°C to +150°C

5. Exceeding any one or combination of these limits may cause permanent damage to this device.  
6. M/A-COM Technology Solutions does not recommend sustained operation near these survivability limits.

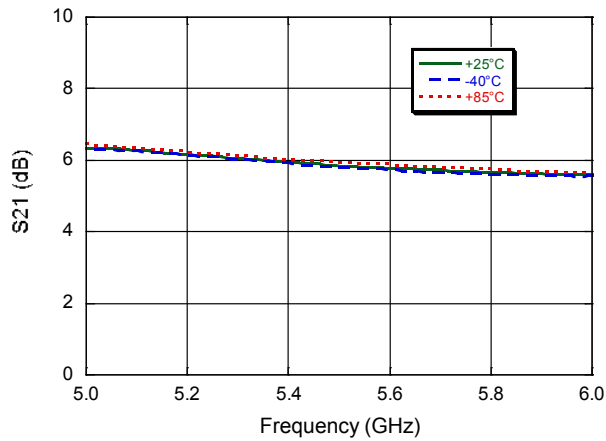
### Truth Table<sup>7,8</sup>

Control V1	Control V2	RFC- $R_X$	RFC- $T_X$
Low	Low	Bypass Mode	Off
Hi	Low	Gain Mode	Off
Low	Hi	Off	On

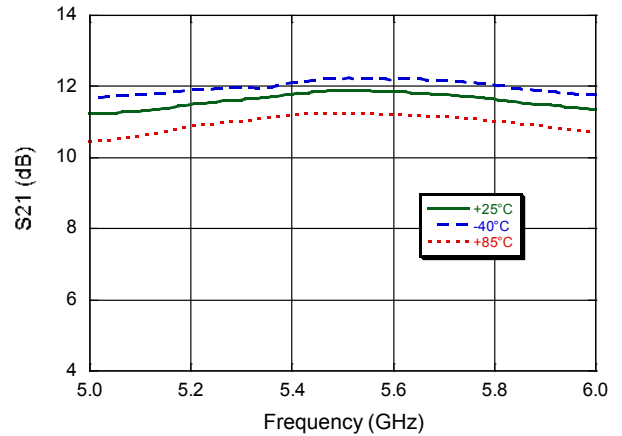
7. Differential voltage, V (state Low) - V (state Hi), must be +2.7 V minimum and must not exceed +5 V.  
8. Low =  $0 \pm 0.3\text{ V}$ , Hi = +2.7 V to +5 V.

**Typical Performance Curves:**

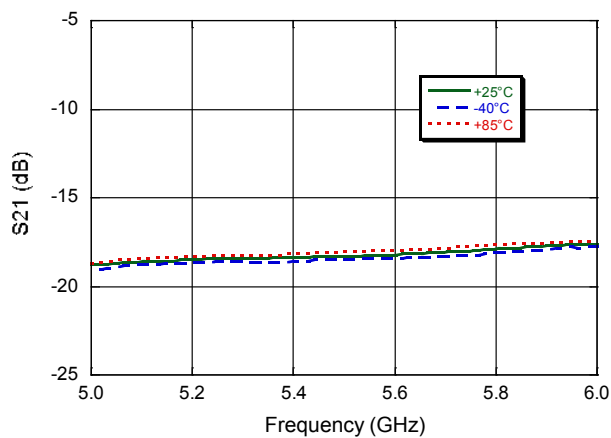
**R<sub>x</sub> Insertion Loss, Bypass Mode**



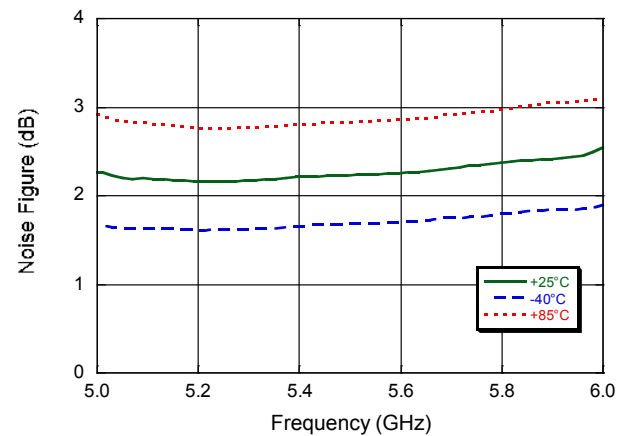
**R<sub>x</sub> Gain, Gain Mode**



**RFC - R<sub>x</sub> Isolation (T<sub>x</sub> On)**

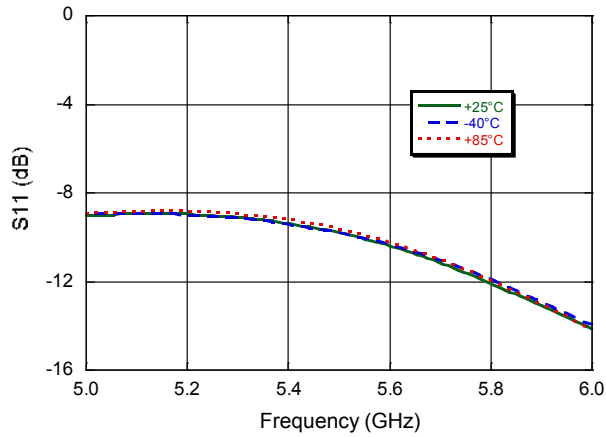


**R<sub>x</sub> Noise Figure, Gain Mode**

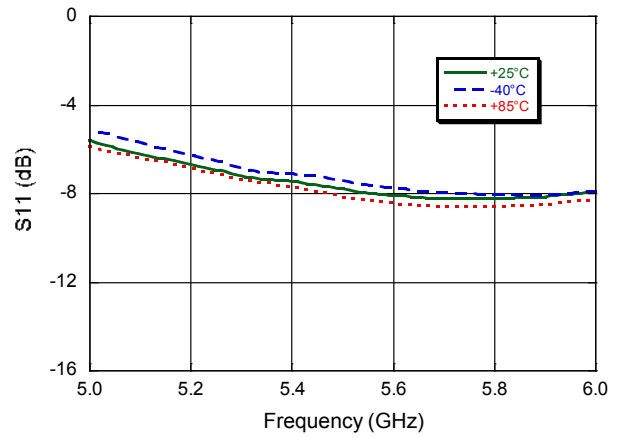


## Typical Performance Curves:

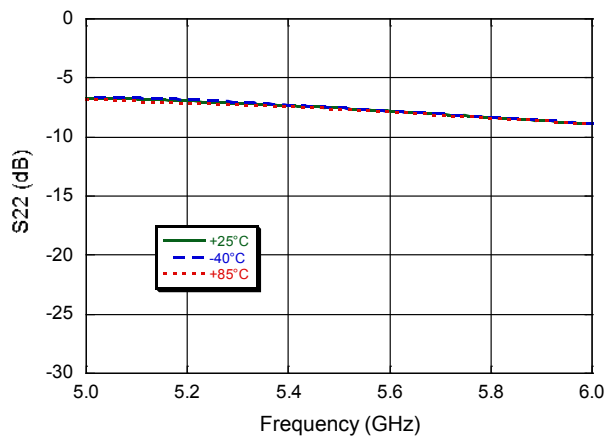
**R<sub>x</sub> Input Return Loss, Bypass Mode**



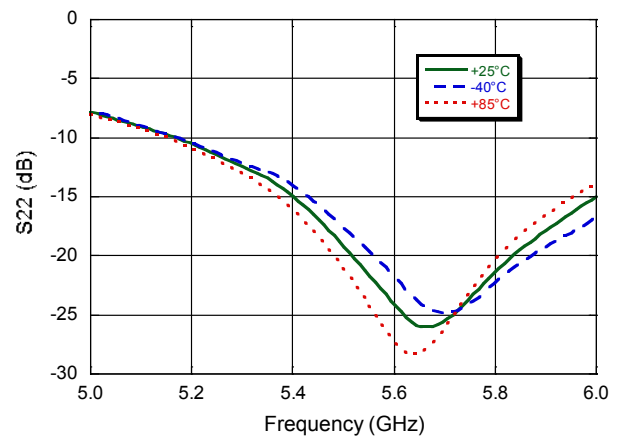
**R<sub>x</sub> Input Return Loss, Gain Mode**



**R<sub>x</sub> Output Return Loss, Bypass Mode**



**R<sub>x</sub> Output Return Loss, Gain Mode**

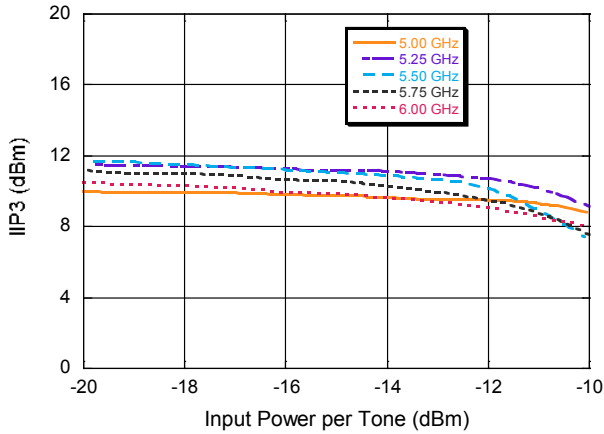


## Integrated SPDT Switch and LNA with Bypass Mode 5.0 - 6.0 GHz

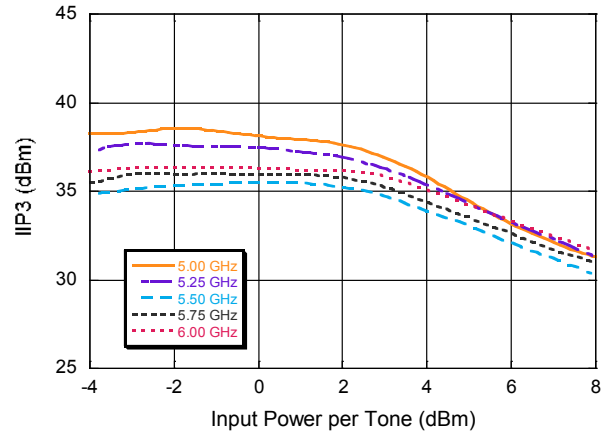
Rev. V4

### Typical Performance Curves:

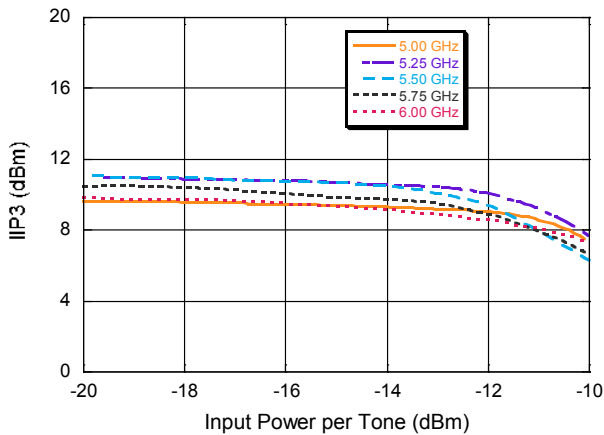
**R<sub>x</sub> Input IP<sub>3</sub>, Gain Mode @ +25°C**



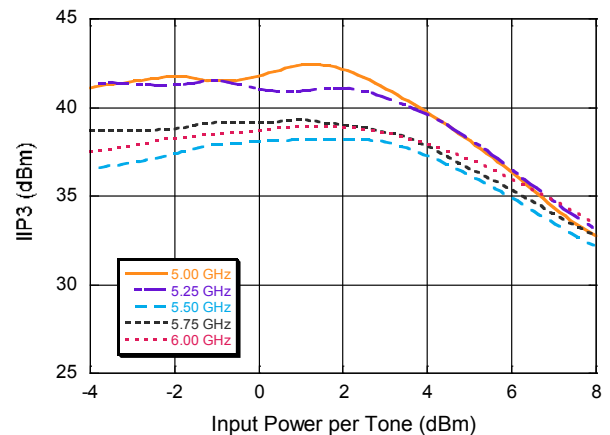
**R<sub>x</sub> Input IP<sub>3</sub>, Bypass Mode @ +25°C**



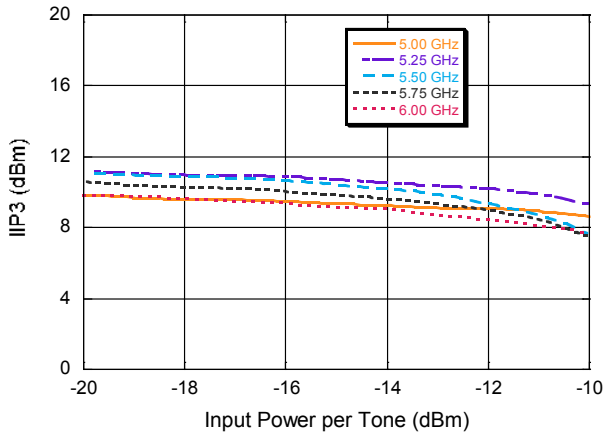
**R<sub>x</sub> Input IP<sub>3</sub>, Gain Mode @ -40°C**



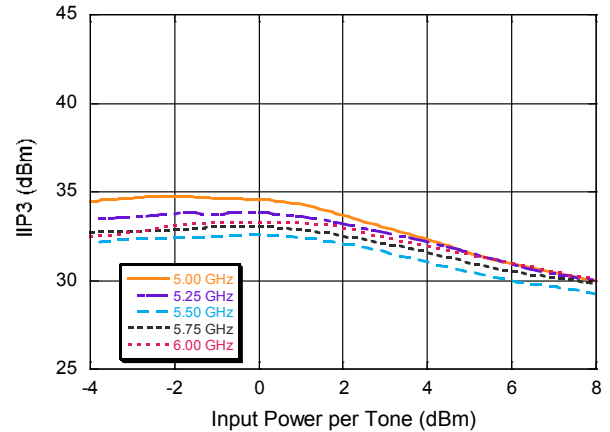
**R<sub>x</sub> Input IP<sub>3</sub>, Bypass Mode @ -40°C**



**R<sub>x</sub> Input IP<sub>3</sub>, Gain Mode @ +85°C**

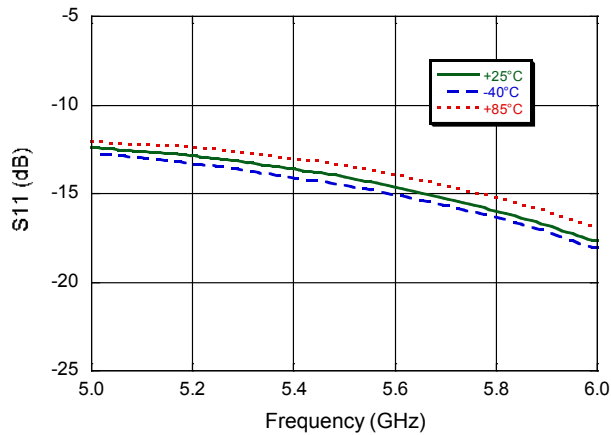


**R<sub>x</sub> Input IP<sub>3</sub>, Bypass Mode @ +85°C**

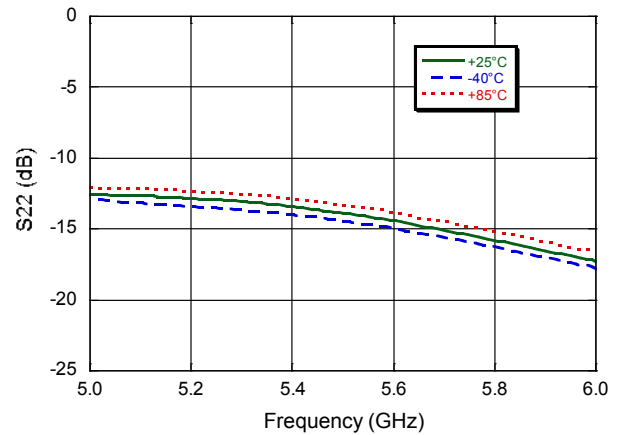


## Typical Performance Curves:

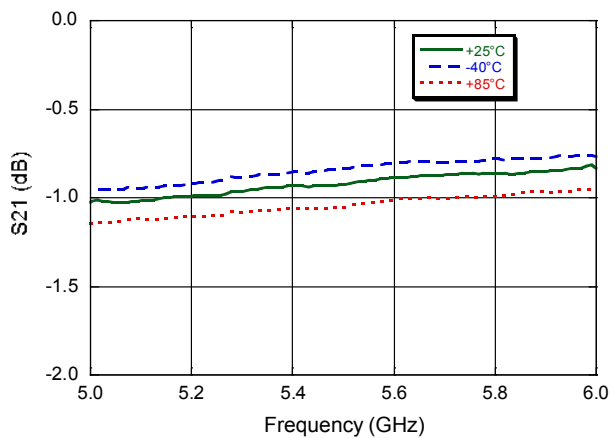
**$T_x$  Input Return Loss**



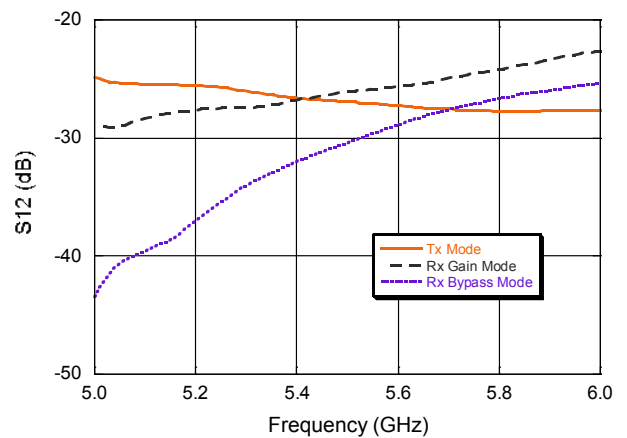
**$T_x$  Output Return Loss**



**$T_x$  Insertion Loss**

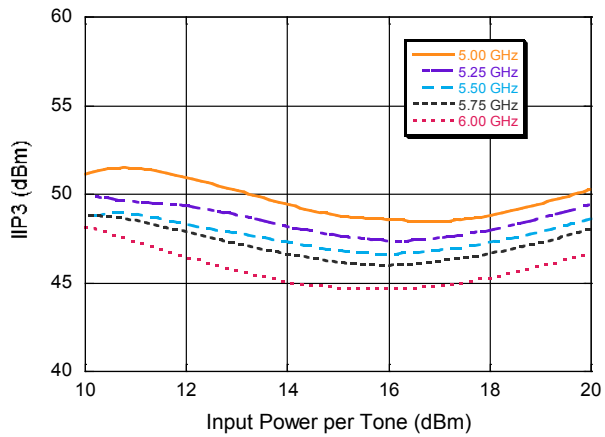


**$T_x - R_x$  Isolation**

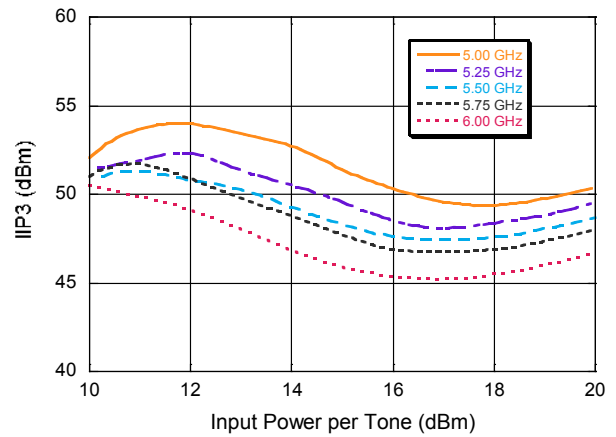


### Typical Performance Curves:

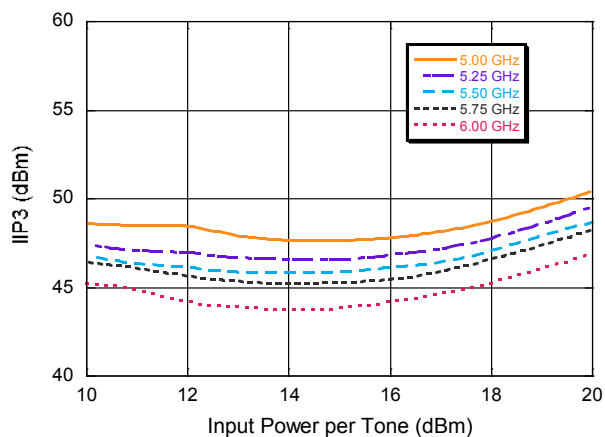
$T_x$  Input IP3 @ +25°C



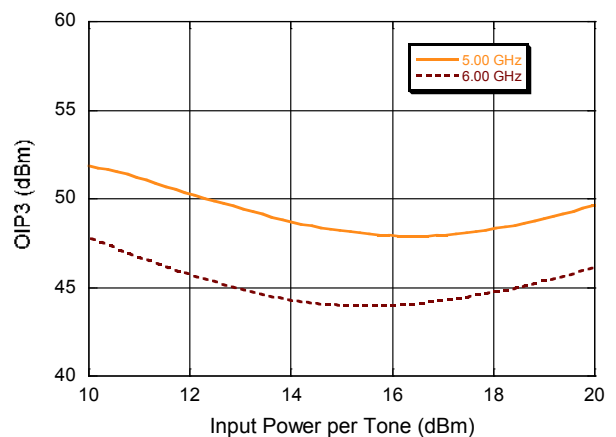
$T_x$  Input IP3 @ -40°C



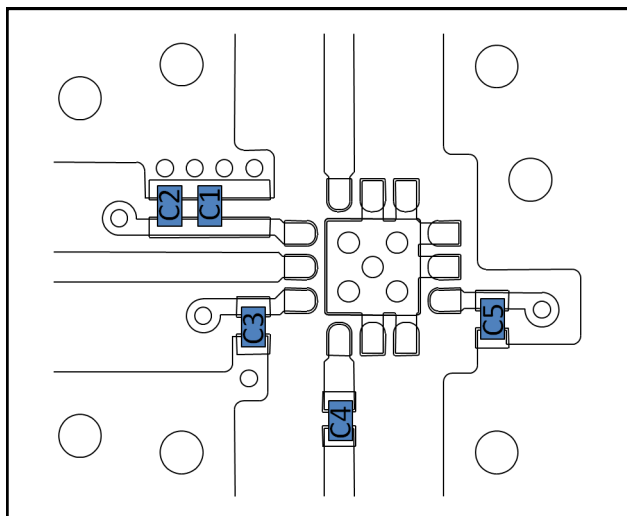
$T_x$  Input IP3 @ +85°C



$T_x$  Output IP3 @ +25°C

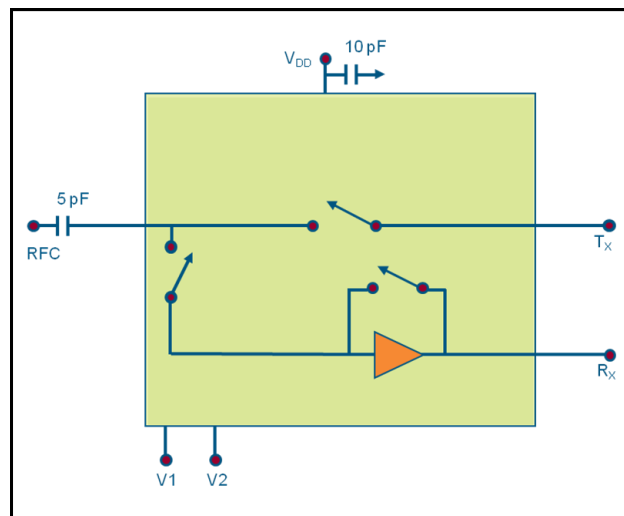


## Recommended Sample Board<sup>9</sup>



9. Place C1 and C2 as shown.

## Functional Schematic



## Parts List

Component	Value	Case Size
C1	10 pF	0201
C2, C3, C5	0.1 $\mu$ F	0201
C4	5 pF	0201

## Handling Procedures

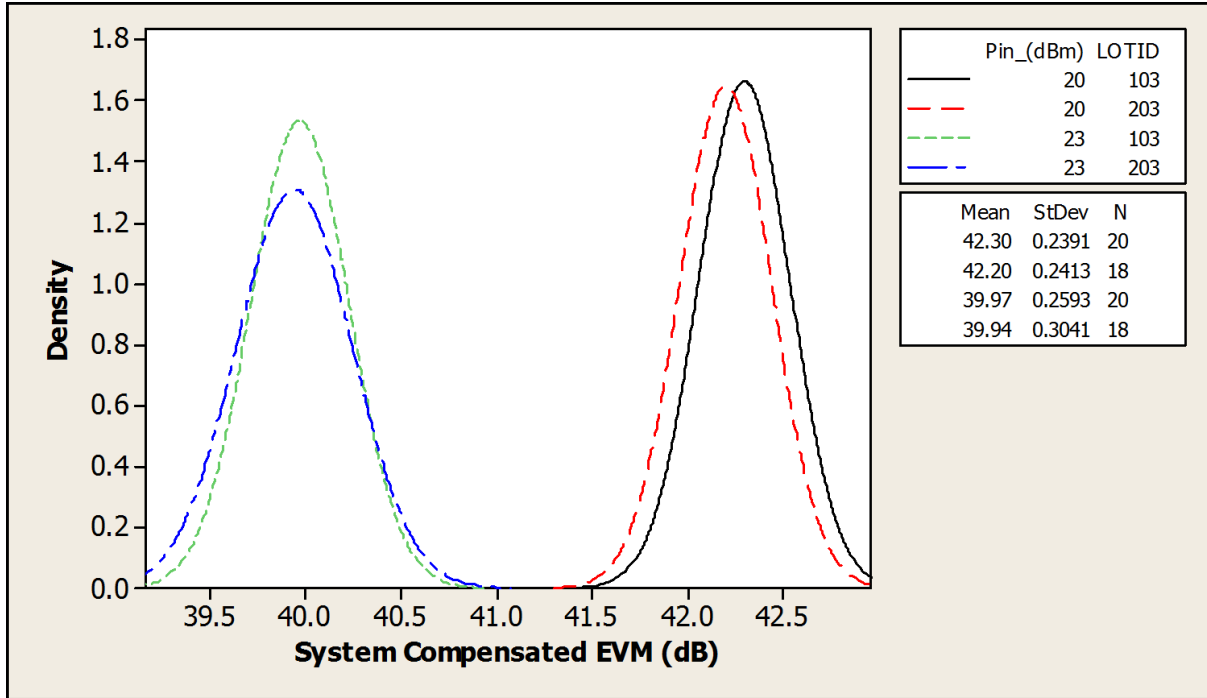
Please observe the following precautions to avoid damage:

## Static Sensitivity

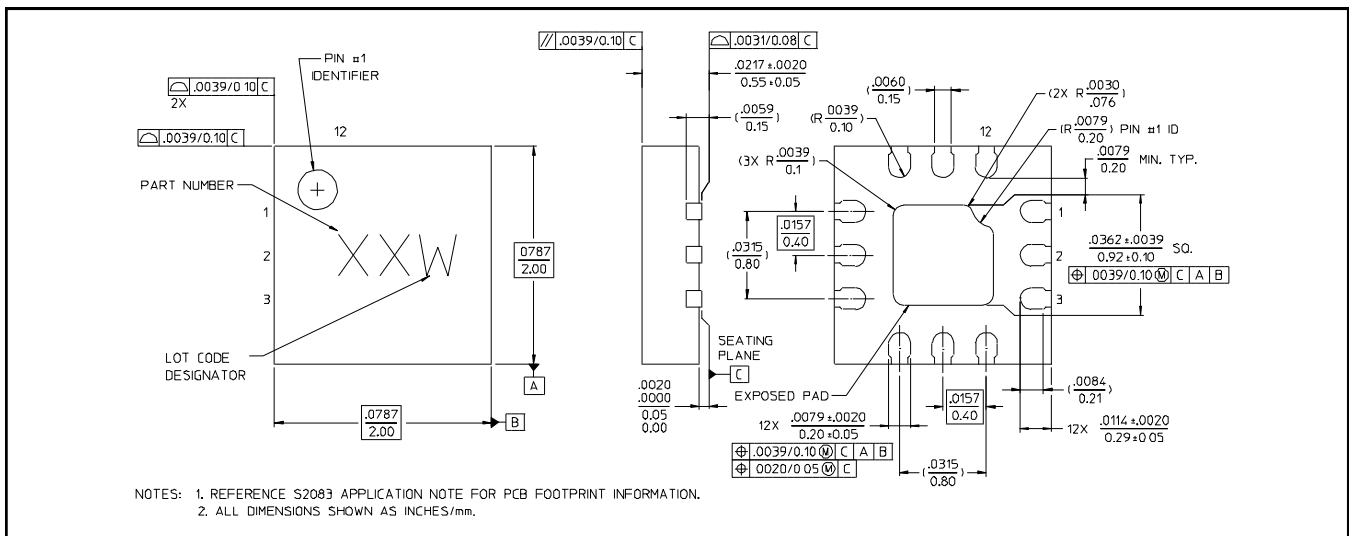
Gallium Arsenide Integrated Circuits are sensitive to electrostatic discharge (ESD) and can be damaged by static electricity. Proper ESD control techniques should be used when handling these devices.



## System Compensated EVM, 802.11AC 80 MHz / 256 QAM



## Lead-Free 2 mm STQFN-12LD-0.4mm Pitch†



† Reference Application Note S2083 for lead-free solder reflow recommendations.  
 Meets JEDEC moisture sensitivity level 1 requirements.  
 Plating is Ni/Pd/Au over Copper.

M/A-COM Technology Solutions Inc. All rights reserved.

Information in this document is provided in connection with M/A-COM Technology Solutions Inc ("MACOM") products. These materials are provided by MACOM as a service to its customers and may be used for informational purposes only. Except as provided in MACOM's Terms and Conditions of Sale for such products or in any separate agreement related to this document, MACOM assumes no liability whatsoever. MACOM assumes no responsibility for errors or omissions in these materials. MACOM may make changes to specifications and product descriptions at any time, without notice. MACOM makes no commitment to update the information and shall have no responsibility whatsoever for conflicts or incompatibilities arising from future changes to its specifications and product descriptions. No license, express or implied, by estoppel or otherwise, to any intellectual property rights is granted by this document.

THESE MATERIALS ARE PROVIDED "AS IS" WITHOUT WARRANTY OF ANY KIND, EITHER EXPRESS OR IMPLIED, RELATING TO SALE AND/OR USE OF MACOM PRODUCTS INCLUDING LIABILITY OR WARRANTIES RELATING TO FITNESS FOR A PARTICULAR PURPOSE, CONSEQUENTIAL OR INCIDENTAL DAMAGES, MERCHANTABILITY, OR INFRINGEMENT OF ANY PATENT, COPYRIGHT OR OTHER INTELLECTUAL PROPERTY RIGHT. MACOM FURTHER DOES NOT WARRANT THE ACCURACY OR COMPLETENESS OF THE INFORMATION, TEXT, GRAPHICS OR OTHER ITEMS CONTAINED WITHIN THESE MATERIALS. MACOM SHALL NOT BE LIABLE FOR ANY SPECIAL, INDIRECT, INCIDENTAL, OR CONSEQUENTIAL DAMAGES, INCLUDING WITHOUT LIMITATION, LOST REVENUES OR LOST PROFITS, WHICH MAY RESULT FROM THE USE OF THESE MATERIALS.

MACOM products are not intended for use in medical, lifesaving or life sustaining applications. MACOM customers using or selling MACOM products for use in such applications do so at their own risk and agree to fully indemnify MACOM for any damages resulting from such improper use or sale.