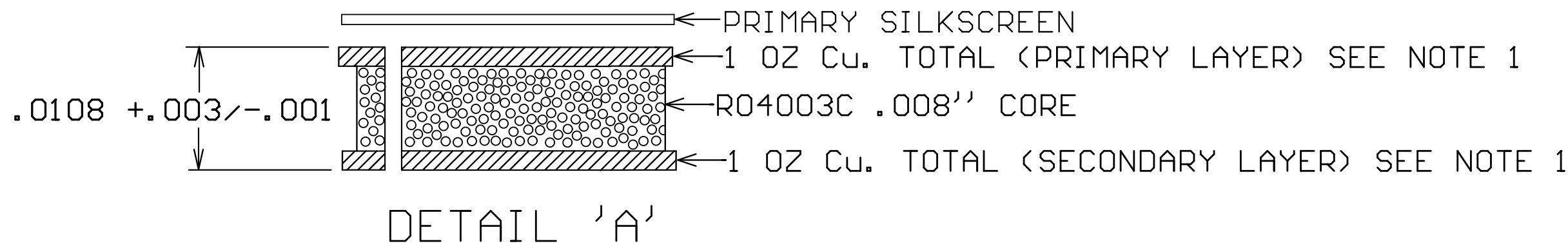
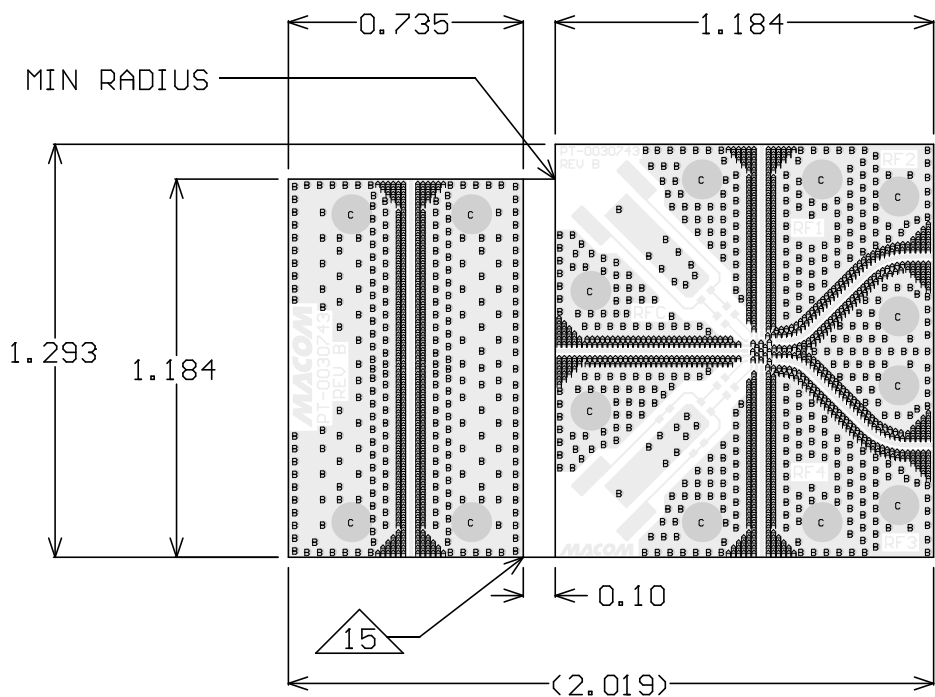


BOARD DIELECTRIC / COPPER STACKUP
FINAL BOARD THICKNESS
(EXCLUDING PRIMARY SILKSCREEN)



Symbol	Count	FHS	Tolerance	Plated	Hole Type
A	1148	8.00mil	+3/-8mil	PTH	Round
B	666	13.00mil	+3/-13mil	PTH	Round
C	14	78.00mil	+/-3mil	PTH	Round
	1828 Total				



NOTES:

- MATERIAL:
DIELETRIC: R04003C, 8 MIL THICKNESS.
TOTAL COPPER THICKNESS ON PRIMARY AND SECONDARY SHALL BE 1 OZ.
MATERIAL STACKUP, AND THICKNESS, PER DETAIL 'A'.
- FINISH: PRIMARY AND SECONDARY SIDE FINISH;
ELECTROLESS NICKEL/IMMERSION GOLD (ENIG) PER IPC-4552.
ELECTROLESS NICKEL: 118-236 MICRO-INCHES
IMMERSION GOLD: 2-8 MICRO-INCHES
THERE SHALL BE NO PITS, PIN HOLES, SCRATCHES OR NODULES WITHIN EXPOSED METAL AREAS
STACKUP REPRESENTS FINISHED THICKNESS.
- PCB SHALL BE BUILT PER IPC-6012 CLASS 2 AND CONFORM TO IPC-A-600 CLASS 2 LATEST REVISIONS.
- ALL HOLES TO BE PLATED THRU UNLESS OTHERWISE SPECIFIED.
- ELECTRONIC DATA IS EQUAL TO THE FINISHED LINE WIDTH.
- ALL FINISHED HOLE SIZES APPLY AFTER PLATING.
- COPPER PLATING IN THROUGH HOLES WILL BE .001'' MINIMUM AVERAGE WITH AN ABSOLUTE MINIMUM OF .0007''.
- DIMENSIONS SHOWN ARE FOR LOCATION OF 0,0 FOR THE DRILL FILE.

9. LINE WIDTH AND SPACING SHALL BE WITHIN TOLERANCE OF 1 MIL. DO NOT ADJUST LINE WIDTH AND SPACING.


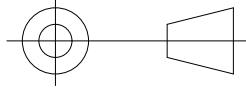
10. ELECTRONIC DATA IS EQUAL TO THE FINISHED LINE WIDTH.

- NO SOLDERMASK ON PCB.
- GROUND FILL SHALL EXTEND TO BOARD EDGES UNLESS OTHERWISE NOTED.
EXPOSED COPPER ON BOARD EDGE SHALL BE ACCEPTABLE.
- PRIMARY SILKSCREEN SHALL BE WHITE NON-CONDUCTIVE EPOXY INK.
- VENDOR MARKING SHALL BE ACCEPTABLE AS SILKSCEEN. DO NOT ADD OVER EXPOSED TRACES OR PADS.

15. BOARDS SHALL BE ROUTED OUT AND SHIPPED SEPERATELY.

- ALL MATERIALS DESCRIBED IN THIS DOCUMENT/DRAWING SHALL BE IN COMPLIANCE WITH AND CONTAIN NO SUBSTANCES RESTRICTED OR REQUIRING SPECIAL RECLAMATION UNDER THE LATEST RoHS, WEEE OR ELV DIRECTIVES.

X	VARIOUS
NEXT ASSY	USED ON
APPLICATION	

UNLESS OTHERWISE SPECIFIED INTERPRET DRAWING PER ASME Y14.5 DO NOT SCALE THIS DRAWING	UNLESS OTHERWISE SPECIFIED DIMENSIONS ARE IN INCHES		 WWW.MACOM.COM		
NOTE: THIS DRW INCORPORATES THIRD ANGLE PROJECTION 	TOLERANCES ON				
MACOM Technology Solutions CONFIDENTIAL INFORMATION SUBJECT TO NDA <small>The information contained in this document or material is the valuable and confidential property of MACOM Technology Solutions Holdings, Inc. and/or its subsidiaries or affiliates (collectively "MACOM"), provided to you subject to a non-disclosure agreement between you and MACOM solely for use in supporting MACOM's business as and to the extent MACOM authorizes in writing from time to time. This information shall be held in strictest confidence and shall not be reproduced, published, disclosed to others, or used for any purpose except as and to the extent specifically permitted in writing by MACOM. This document or material shall be promptly returned to MACOM or destroyed upon request, completion of the use for which it was made available to recipient, or termination of MACOM's relationship with recipient, whichever first occurs.</small>	DECIMALS	ANGLES	TITLE PCB, SOI SP4T SWITCH SMB		
	.X ±.1 .XX ±.02 .XXX ±.005 .XXXX ±.0005	±0.5			
	UNLESS OTHERWISE SPECIFIED 63 ALL OVER		SIZE B	DRAWING NO. PT-0030743	REVISION B
MATERIAL SEE NOTE 1	FINISH SEE NOTE 2		SCALE: 1:1	PACKAGE TYPE: 3mmPQFN40P-22LD	SHEET 1 OF 1