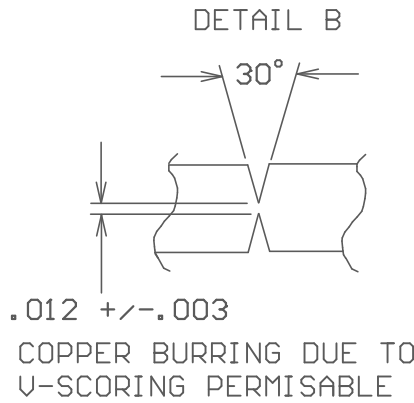
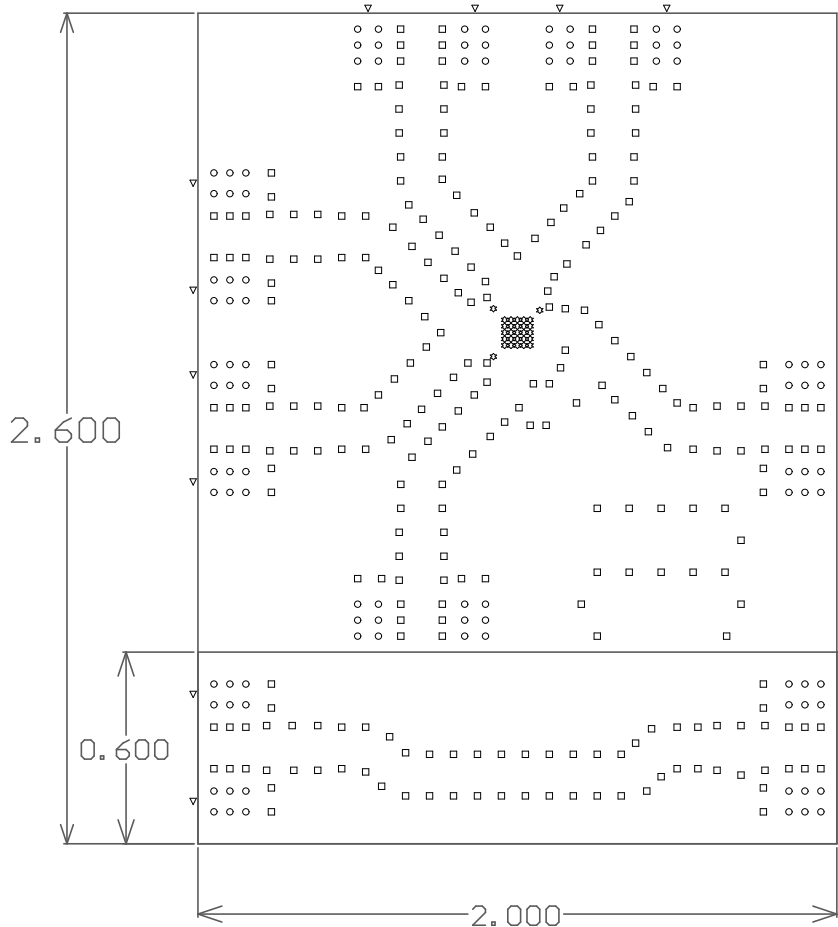


| REVISIONS | |
|-----------|------------------|
| REV | DESCRIPTION |
| CI | PER CO CO-030784 |
| | |

| Symbol | Count | Hole Size | Plated | Hole Type |
|--------|-----------|--------------------|--------|-----------|
| ⊗ | 28 | 10.00mil (0.254mm) | PTH | Round |
| □ | 276 | 16.00mil (0.406mm) | PTH | Round |
| ○ | 96 | 18.00mil (0.457mm) | PTH | Round |
| ▽ | 14 | 70.00mil (1.778mm) | PTH | Round |
| | 414 Total | | | |



NOTES:

- MATERIAL:
R04350 NOMINAL DIELECTRIC CONSTANT 3.48 NOMINAL AT 2.5 GHZ, Tg>280C, DISSIPATION FACTOR =.0031 .
370HR DIELECTRIC CONSTANT 4.29@1.0 GHZ, Tg = 170C.
MATERIAL STACKUP, THICKNESS, AND STARTING COPPER FOIL PER DETAIL "A"
- FINISH:
ENTIRE BOARD SURFACE TOP/BOTTOM TO BE PLATED WITH IMMERSION GOLD, 2-8 MICRO-INCH THICK PER IPC-6012, TYPE 3, OVER 100-200 MICRO-INCHES ELECTROLESS NICKEL PLATE PER ASTM B 733-97, THERE SHALL BE NO PITS, PIN HOLES OR NODULES WITHIN EXPOSED METAL AREAS. STACKUP REPRESENTS FINISH BOARD THICKNESS. EXCLUDING SOLDERMASK.
- PCB SHALL CONFORM TO IPC-A-600 CLASS 2.
- ALL HOLES TO BE PLATED THRU UNLESS OTHERWISE SPECIFIED.
- LPI SOLDER MASK COATING SHALL CONFORM TO IPC-SM-840, CLASS2.
- GERBER DATA IS EQUAL TO THE FINISHED LINE WIDTH.
- ALL HOLE SIZES APPLY AFTER PLATING.
- COPPER PLATING IN THROUGH HOLES WILL BE .001" MINIMUM AVERAGE WITH AN ABSOLUTE MINIMUM OF .0007" AND MAXIMUM OF .0014".
- DIMENSIONS SHOWN ARE FOR LOCATION OF 0,0 FOR THE DRILL FILE.
- ALL MICROSTRIP LINES ON LAYER 1 ARE CONTROLLED IMPEDANCE. A 14 MIL LINE WIDTH SHALL BE 50 OHMS +/-5% WITH REFERENCE TO THE GND PLANE WITH A DISTANCE OF 6.6 MILS FROM LAYER 2. VENDOR TO ADJUST TRACE WIDTH ON LAYER 1 TO MEET 50 OHM IMPEDANCE.
- NO SILKSCREEN ON PCB.
- GND PLANE ON ALL LAYERS MUST EXTEND TO EDGE OF BOARD UNLESS OTHERWISE NOTED.
- ALL MATERIALS DESCRIBED IN THIS DOCUMENT/DRAWING SHALL BE IN COMPLIANCE WITH AND CONTAIN NO SUBSTANCES RESRICTED OR REQUIRING SPECIAL RECLAIMATION UNDER RoHS WEEE OR ELV DIRECTIVES (2002/95/EC, 2002/96/EC, 2002/53/EC).



Board Outline

| | |
|-------------|---------|
| | |
| X | X |
| NEXT ASSY | USED ON |
| APPLICATION | |

| | | | | | |
|--|---|-------------------------------|---|--|-------------------------|
| <div>UNLESS OTHERWISE SPECIFIED</div> <div>INTERPRET DRAWING PER ASME Y14.5</div> <div>DO NOT SCALE THIS DRAWING</div> <div>NOTE: THIS DRW INCORPORATES THIRD ANGLE PROJECTION</div> <div></div> | <div>UNLESS OTHERWISE SPECIFIED</div> <div>DIMENSIONS ARE IN INCHES</div> | | <div> MACOM</div> <div>100 Chelmsford Street Lowell, MA 01851</div> | | |
| | <div>TOLERANCES ON</div> | | | | |
| | <div>DECIMALS</div> | <div>ANGLES</div> | | | |
| <div>MACOM Technology Solutions, INC.</div> <div>CONFIDENTIAL INFORMATION SUBJECT TO NDA</div> <div>The information contained in this document or material is the valuable and confidential property of MACOM Technology Solutions Holdings, Inc. and/or its subsidiaries or affiliates (collectively "MACOM"), provided to you subject to a non-disclosure agreement between you and MACOM solely for use in supporting MACOM's business as and to the extent MACOM authorizes in writing from time to time. This information shall be held in strictest confidence and shall not be reproduced, published, disclosed to others, or used for any purpose except as and to the extent specifically authorized by MACOM in a separate written agreement. If permission is granted for reproduction, this legend must be included in any and all copies. This document or material shall be promptly returned to MACOM or destroyed upon request, completion of the use for which it was made available to recipient, or termination of MACOM's relationship with recipient, whichever first occurs.</div> | <div>.X .1 ⁺</div> | | <div>TITLE</div> <div>SMB 4mm PQFN 24LD</div> <div>FABRICATION DRAWING</div> | | |
| | <div>.XX .02⁺</div> | <div>⁺ 0.5 °</div> | | | |
| | <div>.XXX .005⁺</div> | | | | |
| | <div>.XXXX .000[±]</div> | | | | |
| | <div>UNLESS OTHERWISE SPECIFIED</div> <div>63 [✓] ALL OVER</div> | | | | |
| <div>MATERIAL</div> | <div>SEE NOTE # 1</div> | <div>SIZE</div> <div>B</div> | <div>CAGE CODE</div> <div>55NN2</div> | <div>DRAWING NO.</div> <div>1000042427-0000000</div> | |
| <div>FINISH</div> | <div>SEE NOTE # 2</div> | <div>SCALE:</div> | <div>X/X</div> | <div>WEIGHT</div> <div>/</div> | <div>SHEET 1 OF 1</div> |